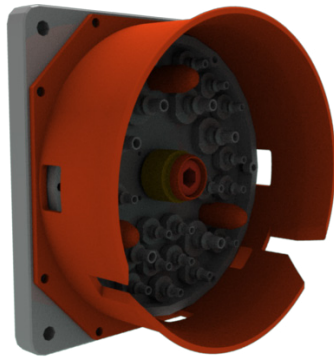
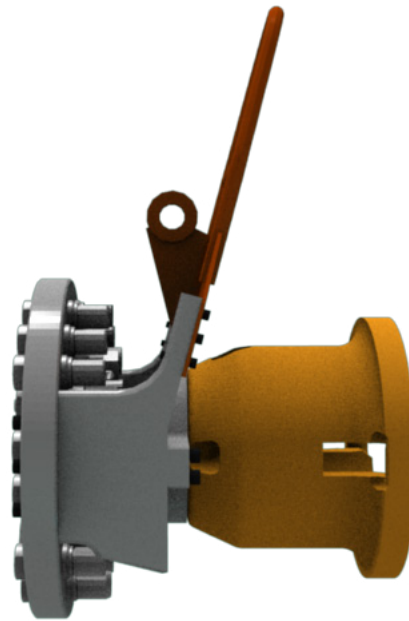


MQC TERMINATOR ALPHA ROV-OPERATED MQC / STAB PLATE



Terminator Alpha Male



Terminator Alpha Female

IMPROVE SUBSEA SAFETY WITH LOW-COMPLEXITY STAB PLATES

UNITECH developed this low complexity ROV Operated Multi Quick Coupler (MQC) in 1986. Early projects included work for Rockwater, Shell and FMC. More recent projects have been undertaken in GOM, Australia and West Africa. Terminator Alpha is just one of the many offerings in UNITECH's extensive range of multi-quick couplers which use a common building block approach.

- Design simplicity and high quality components
- Reliability and safety during the ROV docking and connection phase
- All critical and moving parts are on the removable side
- Hydraulic element sizes from 1/4" to 1"



Qualified to
API 6A PSL-3G
standards

TERMINATOR ALPHA

FEATURES

- All critical latching / locking details on the removable side
- Anti-galling materials: subsea stainless alloys
- No reaction forces transferred to manipulator
- Up to 30.000 psi working pressure
- Angled & staged hydraulic connector & fittings
- Metal to Metal seals available
- All critical hydraulic primary seals are located on the removable side.
- Primary Metal to Metal seal & secondary PTFE Spring Energized seals & HNBR seal in hydraulic connectors
- Anti extrusion seals connect and disconnect under full pressure

SPECIFICATIONS

Standard plate suitable for up to 27 self-sealing hydraulic couplers with metal seals for extra reliability. Other solutions available, depending on coupling size, quantity and pressure requirement.

Materials	
Fixed Plate	AISI 316 L
ROV Operated Plate	Titanium Gr. 23, Super Duplex or AISI 316 L per customer requirement
Hydraulic Elements	Inconel 625, Super Duplex, 254SMO, Nitronic 50 and AISI 316
Seals	
Hydraulic Connector	Double Seals; combinations of metal, PTFE & HNBR
ROV Interface	Torque Tool API 17H Class 4
Temperature Class	PRSTU
Mating Torque	Max 50 Nm
Break Out Torque	400 Nm / 295 ft pound
Design Torque	1000 Nm / 740 ft pound
Water Depth	Pressure compensated, independant of water depth
Tube / Hose Termination	Light-, medium- or heavy-duty brackets, or customer requirements
End Termination	JIC, Autoclave, NPT, Customer Specified
Fluid Compatibility	Water, Hydraulic Fluid, Sea Water, Chemical Injection, Corrosion